


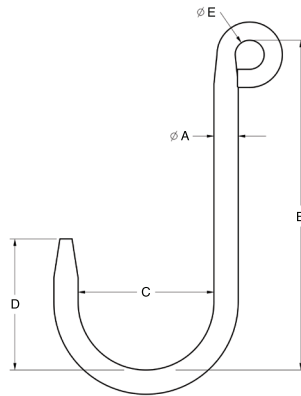
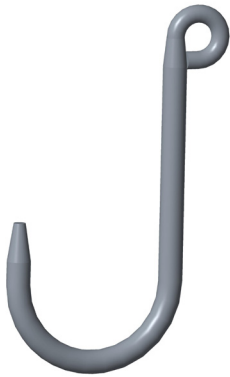
## LIFTING HOOKS

Alloy Steel Foundry Hooks

### LIFTING HOOKS : ALLOY STEEL FOUNDRY HOOKS

- Manufactured to exceed all ASME B30.20 and OSHA regulations.
- Corrosion resistant finish.
- Durable construction ideally suited to jobsite or warehouse use.
- Made in U.S.A.
- Tapered tip.
- Available in long and short reach.
- **Maximum use temperature is 400° F.**
- $\pm 4\%$  on dimensions.
- Custom designs available - call for engineering.
- All eyes welded unless otherwise specified.

 Prop 65 – See Page 102



Material Diameter in Inches*	Part Number	Long Reach Foundry Hooks					Working Load Limit in Pounds*
		A	B	C	D	E	
1/2	<b>14601</b>	0.50	6.00	2.50	2.31	0.75	500
5/8	<b>14602</b>	0.62	8.50	3.50	3.38	0.75	800
3/4	<b>14603</b>	0.75	8.50	3.50	3.38	0.75	1,250
13/16	<b>14604</b>	0.81	8.50	3.50	3.25	0.88	1,600
1	<b>14605</b>	1.00	8.50	4.00	3.75	1.00	2,500

\*Larger capacities and custom configurations available. Please call for ordering assistance.

Material Diameter in Inches*	Part Number	Short Reach Foundry Hooks					Working Load Limit in Pounds*
		A	B	C	D	E	
1/2	<b>14782</b>	0.50	6.00	3.00	3.00	0.75	450
5/8	<b>14783</b>	0.62	6.00	3.00	3.00	0.75	900
3/4	<b>14784</b>	0.75	6.00	3.00	3.00	0.75	1,400
13/16	<b>14785</b>	0.81	6.00	3.00	3.00	0.88	2,000
1	<b>14786</b>	1.00	6.00	3.00	3.00	1.00	3,000

\*Larger capacities and custom configurations available. Please call for ordering assistance.