
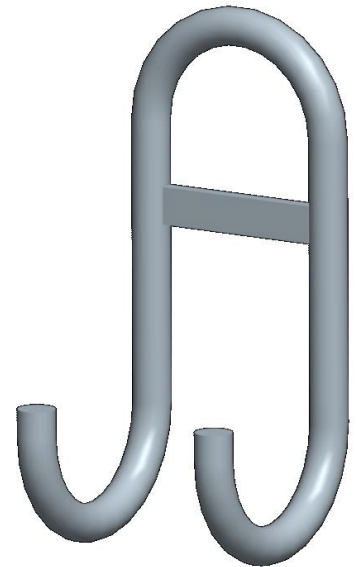
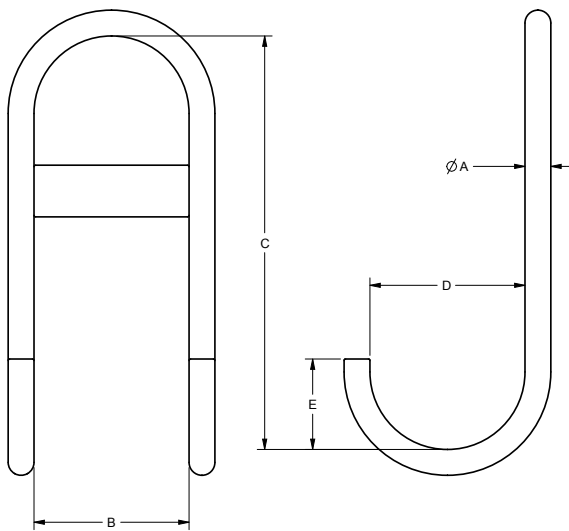


**LIFTING HOOKS : STIRRUP / DOUBLE HOOKS**

- Manufactured to exceed all ASME B30.20 and OSHA regulations.
- Corrosion resistant finish.
- Durable construction ideally suited to jobsite or warehouse use.
- Made in U.S.A.
- +4% on dimensions.
- Custom designs available - call for engineering.
- **Maximum use temperature is 400° F.**

 Prop 65 – See Page 102



| Material Diameter in Inches* | Part Number | A    | B    | C     | D    | E    | Weight | Working Load Limit in Pounds* |
|------------------------------|-------------|------|------|-------|------|------|--------|-------------------------------|
| 3/8                          | 16386       | 0.38 | 2.50 | 8.00  | 2.50 | 1.75 | 1.0    | 450                           |
| 1/2                          | 16387       | 0.50 | 3.00 | 8.00  | 3.00 | 1.75 | 1.8    | 900                           |
| 5/8                          | 16388       | 0.63 | 3.50 | 9.00  | 3.50 | 2.50 | 3.2    | 1,500                         |
| 3/4                          | 16389       | 0.75 | 4.00 | 10.00 | 1.00 | 2.50 | 4.9    | 2,250                         |
| 1                            | 16390       | 1.00 | 4.50 | 12.00 | 4.50 | 3.00 | 10.0   | 4,600                         |

\*Larger capacities and custom configurations available. Please call for ordering assistance.