
LIFTING BEAM - LOW HEADROOM ADJUSTABLE

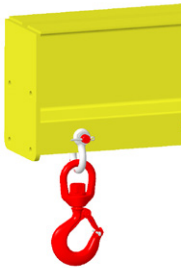
PART NUMBER	L MIN / L MAX (1' Spread ADJ)	OVERALL LENGTH	WORKING LOAD LIMIT IN POUNDS*	A	B	C	D	HR	LOWER SHACKLE SIZE	WEIGHT
22148	3' - 5'	66.5	2,000	3	5	0.88	0.75	12	1/2"	140
22149	5' - 10'	126.5	2,000	3	5	0.88	0.75	12	1/2"	255
22150	10' - 15'	186.5	2,000	3	5	0.88	0.75	14	1/2"	578
22151	15' - 20'	246.5	2,000	3	5	0.88	0.75	14	1/2"	575
24506	20'-25'	306.5	2,000	3	5	0.88	0.75	17	1/2"	1365
24507	25'-30'	366.5	2,000	3	5	0.88	0.75	17	1/2"	1610
22152	3' - 5'	66.5	4,000	3	5	0.88	0.75	12	1/2"	145
22153	5' - 10'	126.5	4,000	3	5	0.88	0.75	13	1/2"	346
22154	10' - 15'	186.5	4,000	3	5	0.88	0.75	17	1/2"	864
22155	15' - 20'	246.5	4,000	3	5	0.88	0.75	17	1/2"	1,115
24508	20'-25'	306.5	4,000	3	5	0.88	0.75	17	1/2"	1365
24509	25'-30'	366.5	4,000	3	5	0.88	0.75	17	1/2"	1925
22156	3' - 5'	66.5	6,000	3	5	1.25	1	13.75	5/8"	217
22157	5' - 10'	126.5	6,000	3	5	1.25	1	15.75	5/8"	385
22158	10' - 15'	186.5	6,000	3	5	1.25	1	17.75	5/8"	1,062
22159	15' - 20'	246.5	6,000	3	5	1.25	1	17.75	5/8"	1,365
24510	20'-25'	306.5	6,000	3	5	1.25	1	19.75	5/8"	1925
24511	25'-30'	366.5	6,000	3	5	1.25	1	19.75	5/8"	1985
22160	3' - 5'	66.5	10,000	4	7	2	1.25	19.62	7/8"	348
22161	5' - 10'	126.5	10,000	4	7	2	1.25	19.62	7/8"	608
22162	10' - 15'	186.5	10,000	4	7	2	1.25	21.62	7/8"	1,123
22163	15' - 20'	246.5	10,000	4	7	2	1.25	21.62	7/8"	1,426
24512	20'-25'	306.5	10,000	4	7	2	1.25	24.62	7/8"	1928
24513	25'-30'	366.5	10,000	4	7	2	1.25	24.62	7/8"	2270
22164	3' - 5'	66.5	15,000	4	7	2	1.25	19.62	7/8"	348
22165	5' - 10'	126.5	15,000	4	7	2	1.25	19.62	7/8"	810
22166	10' - 15'	186.5	15,000	4	7	2	1.25	24.62	7/8"	1,237
22167	15' - 20'	246.5	15,000	4	7	2	1.25	24.62	7/8"	1,577
24514	20'-25'	307	15,000	4	7	2	1.25	23.2	7/8"	2489
24515	25'-30'	367	15,000	4	7	2	1.25	23.2	7/8"	2925

* Call for specifications on larger sizes and capacities

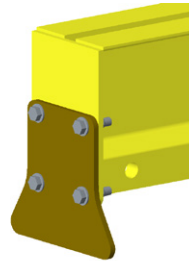
LIFTING BEAMS

Low Headroom Adjustable

OPTIONAL
SHACKLE
& HOOK



OPTIONAL
BOLT ON
STAND



LIFTING BEAM - LOW HEADROOM ADJUSTABLE

PART NUMBER	L MIN / L MAX (1' Spread ADJ)	OVERALL LENGTH	WORKING LOAD LIMIT IN POUNDS*	A	B	C	D	HR	LOWER SHACKLE SIZE	WEIGHT
22168	3' - 5'	66.5	20,000	4	7	2	1.25	19.62	7/8"	348
22169	5' - 10'	126.5	20,000	4	7	2	1.25	21.62	7/8"	815
22170	10' - 15'	186.5	20,000	4	7	2	1.25	24.62	7/8"	1,248
22171	15' - 20'	247	20,000	4	7	2	1.25	23.2	7/8"	2,055
24516	20'-25'	307	20,000	4	7	2	1.25	23.2	7/8"	2489
24517	25'-30'	367	20,000	4	7	2	1.25	24.9	7/8"	3645
22172	3' - 5'	67	40,000	5	9	2.5	1.5	26.2	1 1/8"	706
22173	5' - 10'	127	40,000	5	9	2.5	1.5	26.2	1 1/8"	1,574
22174	10' - 15'	187	40,000	5	9	2.5	1.5	27.9	1 1/8"	2,098
22175	15' - 20'	247	40,000	5	9	2.5	1.5	27.9	1 1/8"	2,643
24518	20'-25'	307	40,000	5	9	2.5	1.5	35.1	1 1/8"	3325
24519	25'-30'	367	40,000	5	9	2.5	1.5	35.1	1 1/8"	3880
22176	3' - 5'	67	60,000	7	16	3.5	2	36	1 1/2"	1,023
22177	5' - 10'	127	60,000	7	16	3.5	2	36	1 1/2"	1,574
22178	10' - 15'	187	60,000	7	16	3.5	2	37.8	1 1/2"	2,389
22179	15' - 20'	247	60,000	7	16	3.5	2	45	1 1/2"	3,058
24520	20'-25'	307	60,000	7	16	3.5	2	48.2	1 1/2"	4535
24521	25'-30'	367	60,000	7	16	3.5	2	51.1	1 1/2"	5783
22180	3' - 5'	67	80,000	7	16	3.5	2.5	39.5	1 3/4"	1,443
22181	5' - 10'	127	80,000	7	16	3.5	2.5	39.5	1 3/4"	2,248
22182	10' - 15'	187	80,000	7	16	3.5	2.5	46.5	1 3/4"	2,763
22183	15' - 20'	247	80,000	7	16	3.5	2.5	49.5	1 3/4"	3,761
24522	20'-25'	307	80,000	7	16	3.5	2.5	52.6	1 3/4"	5255
24523	25'-30'	367	80,000	7	16	3.5	2.5	52.8	1 3/4"	6570