

## INSPECTION / SAFETY DEVICES

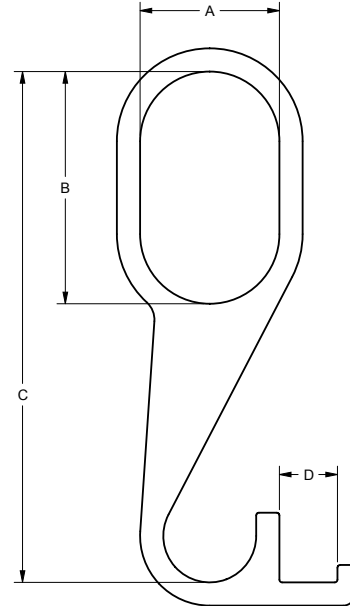
Sling Inspection and Measuring Hook

### SLING INSPECTION AND MEASURING HOOK

- Manufactured to exceed all ASME B30.20 and OSHA regulations.
- Powder coat painted safety red for increased visibility.
- **ALL** Lifting equipment shipped with proof load certification paperwork.
- Durable construction ideally suited to jobsite or warehouse use.
- Made in U.S.A.
- Machined to exacting tolerances.
- U.S. Patent No. 8,028,436

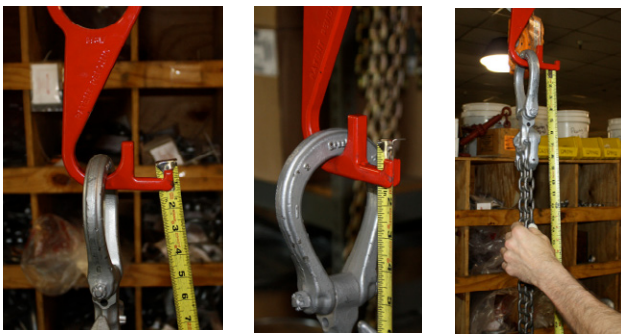
 Prop 65 – See Page 104

Capacity in Pounds	Part Number	A	B	C	D	Weight in Pounds
500	12187	3	5	11	1.3	3
1,000	19474	5	8	15	1.3	6



**SLING INSPECTION AND MEASURING HOOK**

**STEP 1 :** Place sling into bowl of measuring hook. Make sure there are no kinks or twists in chain legs. If the sling is equipped with shortening hooks / clutches, make sure they are disengaged and legs hang free.



**STEP 2 :** Insert your tape measure into the slotted section of the hook. Make sure the tape sits into the groove and is hanging parallel with the chain legs. Do not allow the tape measure to become kinked or rest at an angle.

**STEP 3 :** Perform your daily, link-by-link inspection of the chain sling while raising the hoist hook. This can easily be done at eye level with no stooping or kneeling on the floor.

**Required under OSHA 1910.184(d) :** Each day before being used, the sling and all fastenings and attachments shall be inspected for damage or defects by a competent person designated by the employer. Additional inspections shall be performed during sling use, where service conditions warrant. Damaged or defective slings shall be immediately removed from service.



**STEP 4 :** Measure the bearing of the sling. This can easily be done at eye level by raising the hoist hook. **Because the sling is hanging vertically, the measurement will be more accurate than those taken while the sling is laying on the ground.** Also, the measurement can be easily done by a single person in a short time.

