


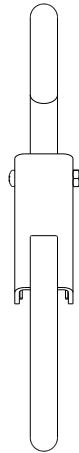
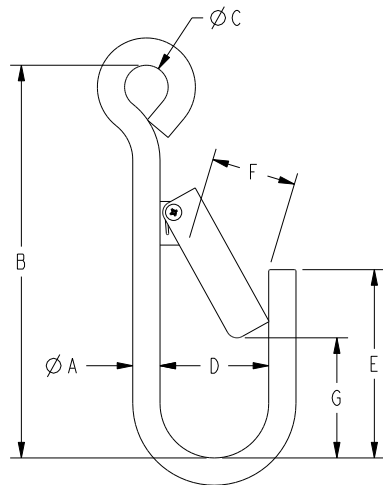
LIFTING HOOKS

Alloy Steel Latching J-Hooks

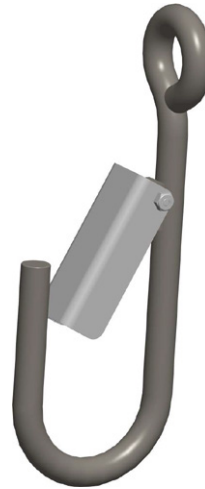
LIFTING HOOKS : ALLOY STEEL LATCHING J-HOOKS

- Manufactured to exceed all ASME B30.20 and OSHA regulations.
- Corrosion resistant finish.
- Durable construction ideally suited to jobsite or warehouse use.
- Made in U.S.A.
- $\pm 4\%$ on dimensions.
- All eyes welded unless otherwise specified.
- **Maximum use temperature is 400° F.**

 Prop 65 – See Page 104



STYLE B



STYLE A



Material ØA in Inches*	Style A Part Number	Style B Part Number	Standard Alloy Steel J-Hooks							Latch	Working Load Limit in Pounds*	Weight LBS
			A	B	C	D	E	F	G			
1/4	16284	17595	0.25	4.50	1.00	1.25	2.00	0.75	1.2	1096325	125	.20
5/16	16016	17596	0.32	5.00	1.00	1.25	2.00	0.80	1.2	1096421	250	.30
3/8	14924	17611	0.38	6.00	1.00	1.50	2.38	0.96	1.3	29380	365	.55
1/2	14767	17612	0.50	8.00	1.00	2.00	3.13	1.50	1.7	29381	650	1.2
5/8	14930	17613	0.62	9.00	1.00	2.50	4.32	1.76	2.5	23888	1,000	2.0
3/4	16383	17614	0.75	10.00	1.25	3.00	5.25	2.21	3.0	23889	1,435	3.4
7/8	16384	17615	0.88	12.00	1.25	3.50	6.25	2.57	3.5	23890	1,900	5.0
1	16385	17616	1.00	14.00	1.25	4.50	8.25	3.70	4.5	23891	2,300	8.0

*Larger capacities and custom configurations available. Please call for ordering assistance.