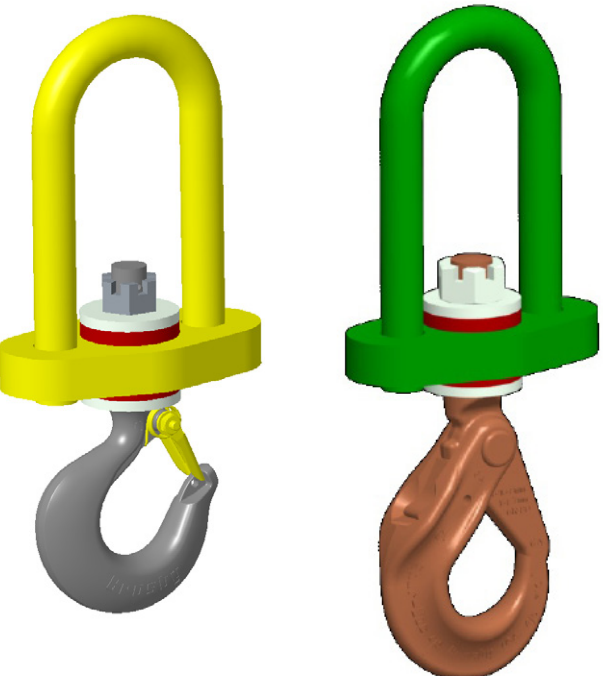
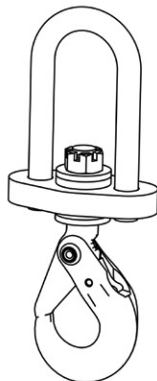
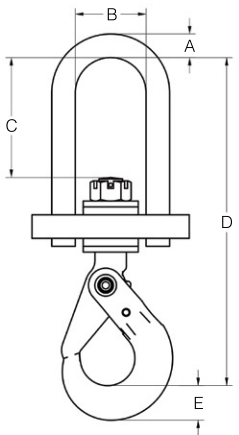
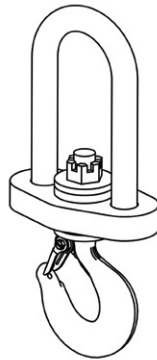
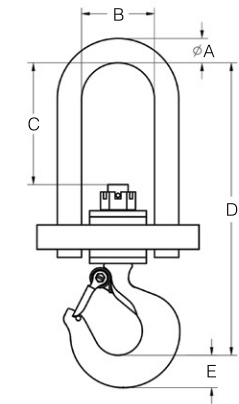


INSULATED SWIVEL HOOKS

- Manufactured to exceed all ASME B30.20 and OSHA regulations.
- **ALL** Lifting Hooks proof loaded and shipped with certification paperwork.
- Durable construction ideally suited to jobsite or warehouse use.
- Made in U.S.A.
- All dimensions in inches unless otherwise noted.
- Electrically insulated - helps eliminate current flow that may damage hoists and lifting equipment.

Prop 65 – See Page 104

| Working Load Limit in Pounds* | Part Number | A | B | C | D | E | F | Weight in Pounds | Color |
|-------------------------------|--------------|------|------|------|-------|-----|------|------------------|--------|
| 4,000 | 16355 | 0.75 | 2.25 | 3.75 | 9.0 | 1.0 | 2.75 | 6 | Yellow |
| 4,500 | 16358 | 0.75 | 2.25 | 3.81 | 10.43 | 1.1 | 2.75 | 7 | Green |



- 16355 Swivel hook with latch
- 16358 Crosby Shur-Loc® hook
- Insulated to 2,000 VDC
- **Do Not Rotate Under Load**