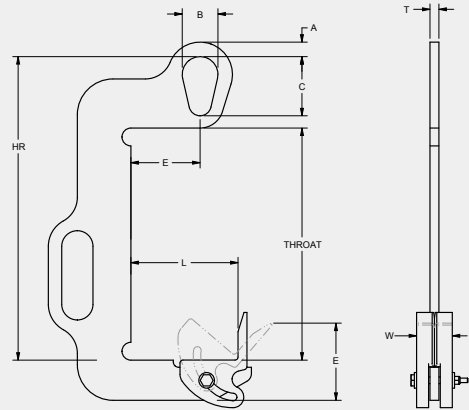


## COIL LIFTER/UPENDERS

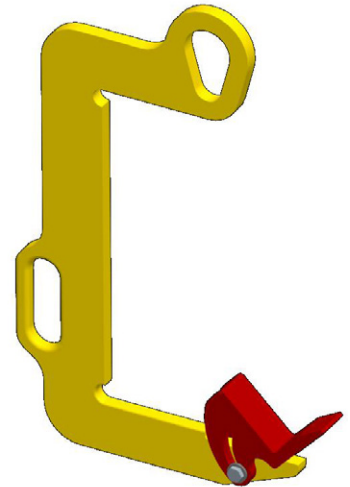
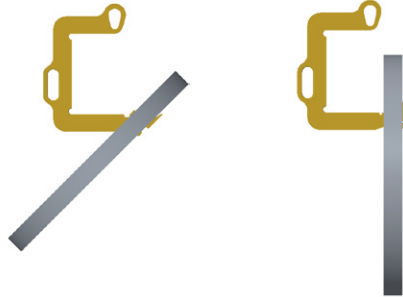
### COIL LIFTER/UPENDER

- Manufactured to exceed all ASME B30.20 and OSHA regulations.
- Painted safety yellow for increased visibility.
- **ALL** Coil Lifters proof loaded and shipped with certification paperwork.
- Durable construction ideally suited to warehouse use.
- Made in U.S.A.
- Custom designs available - call for engineering.
- **ALL** lifting equipment individually proof loaded per OSHA requirements.
- Easy horizontal to vertical upending of coils.

Prop 65 – See Page 104



UPENDING COIL



Working Load Limit in Pounds*	Part Number	Throat	HR	A	B	C	E	T	W	L	D	Weight in Pounds
1,000	14480	13.0	17.0	0.81	2.00	3.31	4.06	0.50	2.00	6.0	2.25	17
1,000	14481	13.0	17.0	0.81	2.00	3.31	4.56	0.50	2.00	12.0	2.75	23
2,000	14482	16.0	20.0	0.81	2.00	3.31	3.89	0.50	2.00	8.0	2.50	20
4,000	14483	18.0	23.1	1.00	2.63	4.00	5.05	0.75	2.00	10.0	2.75	33
7,000	14484	20.0	26.3	1.18	3.63	5.31	6.26	1.00	2.50	12.0	3.50	61

\* Call for specifications on larger sizes and capacities