

## SYNTHETIC SLING

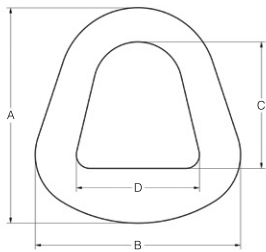
Triangle and Choker  
Aluminum



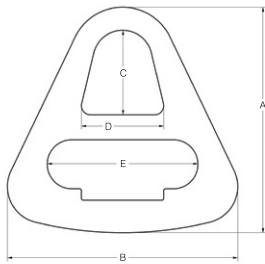
### SYNTHETIC SLING TRIANGLES AND CHOKERS : ALUMINUM

- Aluminum Triangle and Choker fittings engineered to be used on single-ply capacity slings.
- Aluminum resists corrosion.
- Aluminum alloy designed for overhead lifting applications.
- 100% domestic parts and workmanship.
- Machined to exacting tolerances.

Prop 65 – See Page 104



SPECIFICATIONS FOR ALUMINUM TRIANGLES							Minimum Breaking Strength
Part Number	Sling Width	Dimensions				Weight	
		A	B	C	D		
11469	2	3.94	3.75	2.31	2.25	.4	16,800
11470	3	5.31	5.00	3.31	3.06	.6	25,000
11471	4	6.75	6.75	3.75	4.25	1.2	33,500
13263	5	8.00	8.13	4.75	5.25	1.5	40,000
11472	6	9.25	9.38	5.50	6.13	2.0	48,500



SPECIFICATIONS FOR ALUMINUM CHOKERS							Minimum Breaking Strength	
Model Number	Sling Width	Dimensions						Weight
		A	B	C	D	E		
11473	2	6.16	6.29	2.31	2.24	4.12	.9	16,800
11474	3	8.00	8.17	3.31	3.06	5.40	1.5	25,000
11475	4	9.40	10.67	3.75	4.25	7.10	2.4	33,500
13264	5	11.29	12.00	4.75	5.25	8.19	3.2	40,000
11476	6	13.25	14.48	5.50	6.13	9.75	8.5	48,500