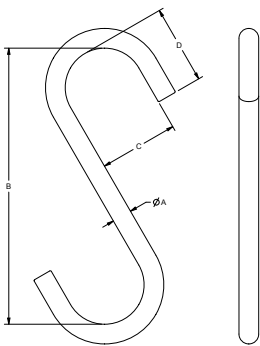


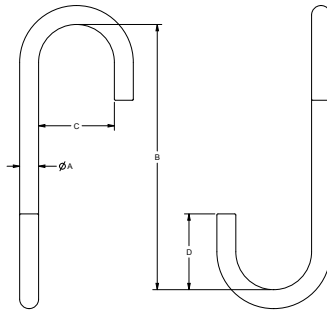
LIFTING HOOKS : ALLOY STEEL S-HOOKS

- Manufactured to exceed all ASME B30.20 and OSHA regulations.
- Corrosion resistant finish.
- Durable construction ideally suited to jobsite or warehouse use.
- Made in U.S.A.
- **Maximum use temperature is 400° F.**
- ±4% on dimensions.
- Custom designs available - call for engineering.
- Square and hex stock available.

 Prop 65 – See Page 112



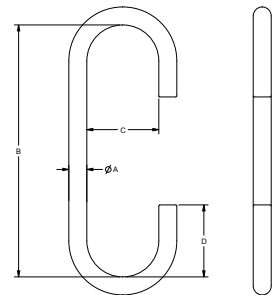
STYLE A



STYLE B



STYLE C



Material ØA in Inches*	Part Number			Standard Alloy Steel S-Hooks					Working Load Limit in Pounds*
	Style A	Style B	Style C	A	B	C	D	Weight	
1/4	14189	14198	14207	0.25	5.00	1.25	1.25	0.1	100
5/16	14190	14199	14208	0.31	5.00	1.25	1.25	0.1	250
3/8	14191	14200	14209	0.38	6.00	1.50	1.50	0.3	365
1/2	14192	14201	14210	0.50	7.00	2.00	2.00	0.6	650
9/16	14193	14202	14211	0.56	9.00	2.25	2.25	0.9	800
5/8	14194	14203	14212	0.63	9.00	2.50	2.50	1.2	1,000
3/4	14195	14204	14213	0.75	9.00	2.25	2.25	2.1	1,790
7/8	14196	14205	14214	0.88	10.00	2.63	2.63	3.3	2,440
1	14197	14206	14215	1.00	11.00	3.00	3.00	5.0	3,190

*Larger capacities and custom configurations available. Please call for ordering assistance.