
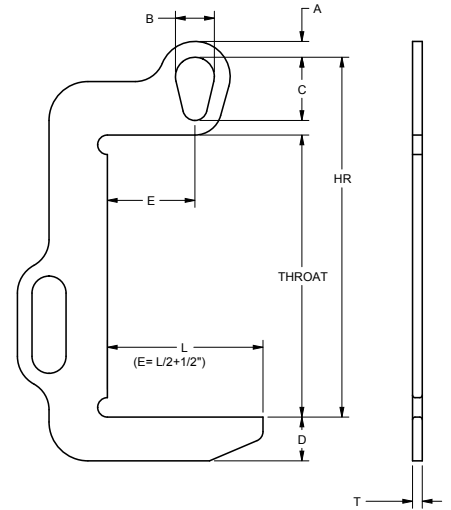


- Manufactured to exceed all ASME B30.20 and OSHA regulations.
- Painted safety yellow for increased visibility.
- **ALL** Coil Lifters proof loaded and shipped with certification paperwork.
- Durable construction ideally suited to warehouse use.
- Made in U.S.A.
- Custom designs available - call for engineering.
- **ALL** lifting equipment individually proof loaded per OSHA requirements.

 Prop 65 – See Page 112



Working Load Limit in Pounds*	Part Number	Throat	HR	A	B	C	D	E	L	T	Weight in Pounds
1,000	14463	14.5	18.5	0.81	2.00	3.25	2.25	4.5	8.0	0.50	14
1,000	14464	14.5	18.5	0.81	2.00	3.25	2.63	6.5	12.0	0.50	15
2,000	14465	17.5	21.5	0.81	2.00	3.25	2.00	4.5	8.0	0.50	14
2,000	14466	17.5	21.5	0.81	2.00	3.25	2.50	8.5	16.0	0.50	19
4,000	14467	19.5	24.6	1.00	2.56	4.06	2.13	4.5	8.0	0.75	27
4,000	14468	19.5	24.6	1.00	2.56	4.06	3.00	8.5	16.0	0.75	35
7,000	14469	21.5	28.2	1.18	3.63	5.31	2.87	6.5	12.0	1.00	52
7,000	14470	21.5	28.2	1.18	3.63	5.31	3.38	8.5	16.0	1.00	59
10,000	14471	25.5	32.9	1.50	4.00	5.81	3.50	8.5	16.0	1.25	87
10,000	14472	25.5	32.9	1.50	4.00	5.81	4.00	10.5	20.0	1.25	101

* Call for specifications on larger sizes and capacities